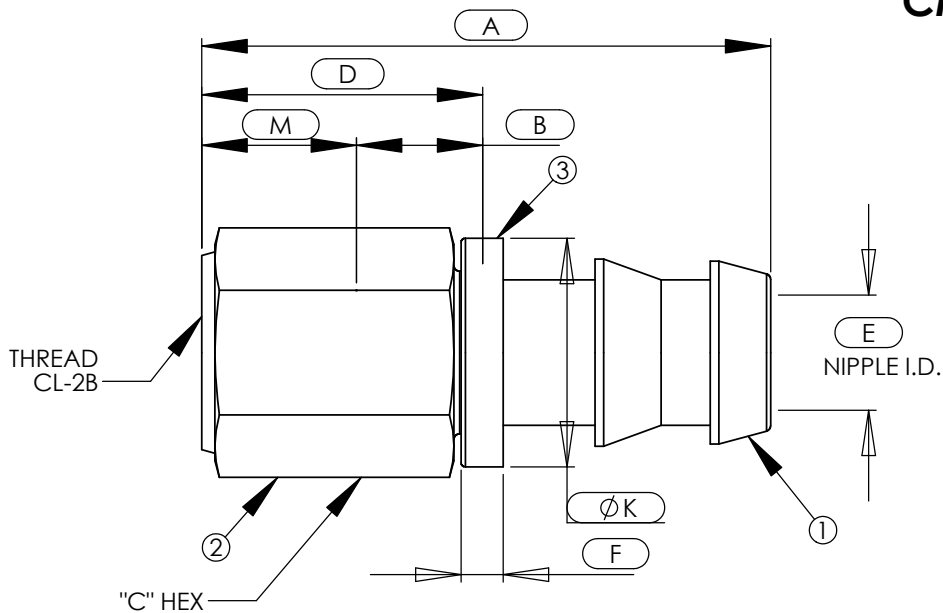


# CMC™ Hose End Fittings

## 37° Flare Female Swivel

For Push On Hose

### CMC-5505



| ASSY PART NUMBER  | HOSE SIZE | THREAD    | A    | B    | C    | D    | E    | F    | K    | M    |
|-------------------|-----------|-----------|------|------|------|------|------|------|------|------|
| CMC-XX-5505-04-04 | 1/4       | 7/16-20   | 1.46 | 0.35 | 0.56 | 0.70 | 0.17 | 0.16 | 0.58 | 0.35 |
| CMC-XX-5505-06-06 | 3/8       | 9/16-18   | 1.67 | 0.39 | 0.69 | 0.80 | 0.30 | 0.16 | 0.72 | 0.41 |
| CMC-XX-5505-08-08 | 1/2       | 3/4-16    | 1.95 | 0.44 | 0.88 | 0.94 | 0.39 | 0.16 | 0.87 | 0.49 |
| CMC-XX-5505-10-10 | 5/8       | 7/8-14    | 2.60 | 0.48 | 1.00 | 1.06 | 0.48 | 0.16 | 1.06 | 0.58 |
| CMC-XX-5505-12-12 | 3/4       | 1 1/16-12 | 2.71 | 0.55 | 1.25 | 1.19 | 0.61 | 0.16 | 1.18 | 0.64 |

B.O.M.

COMPONENT PART NUMBERS

- ② ALL SIZES-.....NI-5505-(TUBE SIZE)-(HOSE SIZE)
- ③ ALL SIZES-.....SWIVEL NUT
- ⑦ PLASTIC- ALL SIZES-.....COLLAR

-EXAMPLE-  
CMC-XX-5505-04-04

SEE PAGE 2 FOR ASSY MATERIAL DESIGNATIONS.