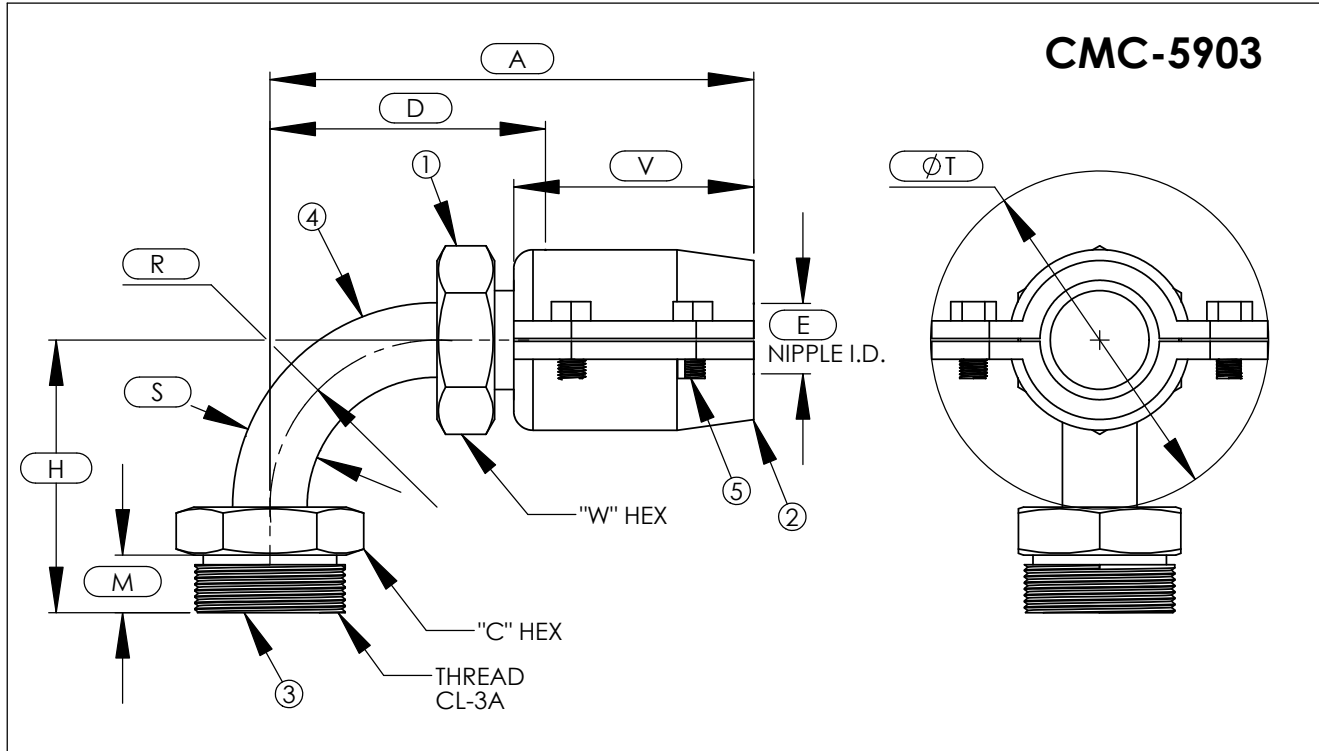


CMC™ Hose End Fittings QPL-24787-12

Male O-Ring Seal, 90°
(CPV) Style

For MIL-H-24136/2 Type IL, MIL-F-24787/3 Group XI, Type CL



ASSY PART NUMBER	IPS SIZE	THREAD	A	C	D	E	H	M	R	S	T	V	W
CMC-XXX-5903-1/4-06	1/4*	1 3/16-12	3.20	1.25	1.58	0.26	1.43	0.62	0.50	0.38	2.34	2.00	0.94
CMC-XXX-5903-1/4-08	1/4*	1 3/16-12	3.56	1.25	1.84	0.39	1.68	0.62	0.75	0.50	2.66	2.10	1.00
CMC-XXX-5903-3/8-06	3/8*	1 3/8-12	3.56	1.44	1.84	0.39	1.74	0.62	0.75	0.50	2.66	2.10	1.00
CMC-XXX-5903-1/2-12	1/2*	1 3/4-12	4.51	1.81	2.61	0.61	2.31	0.62	1.25	0.75	3.27	2.42	1.31
CMC-XXX-5903-3/4-16	3/4	2-12	4.76	2.12	2.85	0.82	2.68	0.62	1.50	1.00	4.02	2.42	1.62
CMC-XXX-5903-1-16	1	2 5/16-12	4.76	2.38	2.85	0.82	2.92	0.75	1.50	1.00	4.02	2.42	1.62
CMC-XXX-5903-1-20	1	2 5/16-12	5.50	2.38	3.40	1.05	3.17	0.75	1.75	1.25	4.31	2.80	2.00
CMC-XXX-5903-1 1/4-20	1 1/4	2 3/4-12	5.50	2.88	3.40	1.05	3.17	0.75	1.75	1.25	4.31	2.80	2.00
CMC-XXX-5903-1 1/2-24	1 1/2	3 1/16-12	5.96	3.12	3.66	1.30	3.55	0.88	2.00	1.50	4.69	3.01	2.25
CMC-XXX-5903-1 1/2-32	1 1/2	3 1/16-12	7.60	3.12	4.52	1.75	4.05	0.88	2.50	2.00	5.65	3.88	2.75
CMC-XXX-5903-2-32	2	3 3/4-12	7.60	3.88	4.52	1.75	4.05	0.88	2.50	2.00	5.65	3.88	2.75

B.O.M.

COMPONENT PART NUMBERS

- ① ALL SIZES-.....NI-5903-(IPS SIZE)-(HOSE SIZE)-(MATL CODE)
- ② ALL SIZES-.....CL-10-(HOSE SIZE)-(MATL CODE)
- ③ ALL SIZES-.....CPV-(IPS SIZE)-(TUBE SIZE)-(MATL CODE)
- ④ MONEL- SIZES 6 THRU 12.....TUBE
- ④ COPPER NICKEL- SIZES 16 THRU 32.....TUBE
- ⑤ K-MONEL- ALL SIZES-.....BT-(SIZE)-(LENGTH)-(MATL CODE)

-EXAMPLE-
CMC-XXX-5903-1/4-06

SEE PAGE 2 FOR ASSY MATERIAL DESIGNATIONS.

* REQUIRES 2 BOLTS ONLY PER SOCKET.