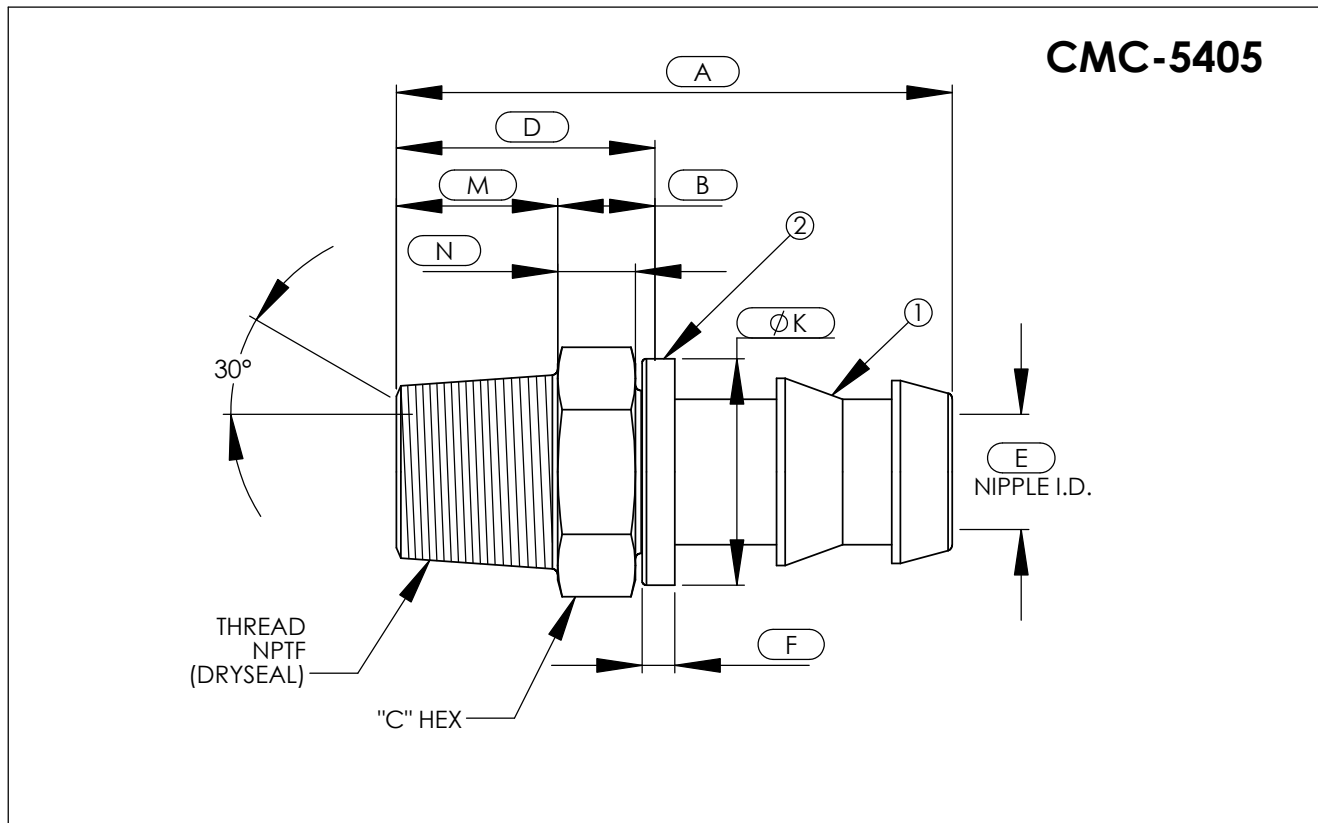


Male Pipe Thread

For Push On Hose



PART NUMBER	HOSE SIZE	NPT THREAD	A	B	C	D	E	F	K	M	N
CMC-X-5405-02-04	1/4	1/8-27	1.40	0.27	0.44	0.65	0.17	0.16	0.58	0.38	0.19
CMC-X-5405-04-04	1/4	1/4-18	1.58	0.27	0.56	0.83	0.17	0.16	0.58	0.56	0.19
CMC-X-5405-04-06	3/8	1/4-18	1.76	0.33	0.56	0.89	0.30	0.16	0.72	0.56	0.25
CMC-X-5405-06-06	3/8	3/8-18	1.76	0.33	0.69	0.89	0.30	0.16	0.72	0.56	0.25
CMC-X-5405-06-08	1/2	3/8-18	1.91	0.33	0.75	0.89	0.39	0.16	0.87	0.56	0.25
CMC-X-5405-08-10	5/8	1/2-14	2.68	0.39	0.88	1.14	0.48	0.16	1.06	0.75	0.31
CMC-X-5405-12-12	3/4	3/4-14	2.72	0.46	1.06	1.21	0.61	0.16	1.18	0.75	0.38

B.O.M.

- ① ALL SIZES-.....BODY
- ② PLASTIC- ALL SIZES-.....COLLAR

-EXAMPLE-
CMC-X-5405-02-04

SEE PAGE 2 FOR ASSY MATERIAL DESIGNATIONS.