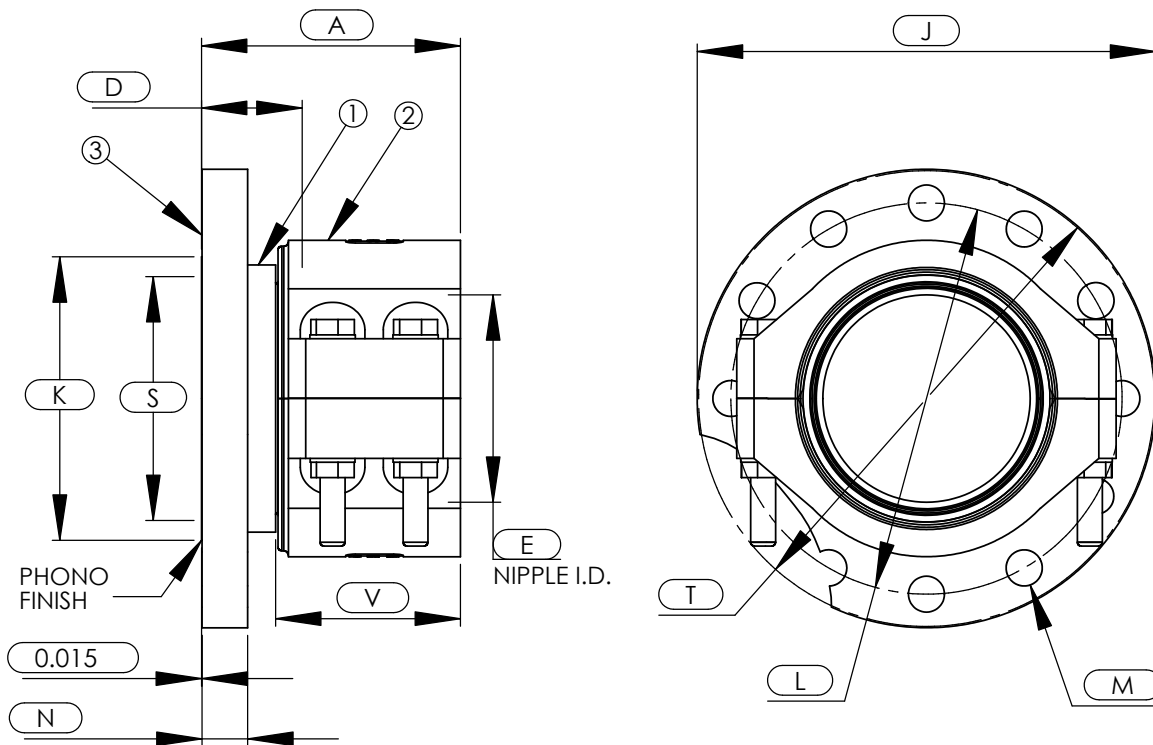


CMC™ Hose End Fittings QPL-24787-12

Straight Nipple, Class I Flange

MIL-F-24787/1, Group IX, Type F, (Sz 80-96)
 MIL-F-24781/1, Group X, Type F, (Sz 40-64)

CMC-5110



ASSY PART NUMBER	IPS SIZE	BOLT HOLE QTY	A	D	E	J	K	L	M	N	S	T	V
CMC-XXX-5110-40-40	2 1/2	8	4.58	1.95	2.05	7.56	3.27	6.00	0.81	0.94	2.71	7.65	3.24
CMC-XXX-5110-48-48	3	8	5.01	1.95	2.51	8.13	4.50	6.56	0.81	0.94	3.31	7.65	3.71
CMC-XXX-5110-64-64	4	9	5.46	2.36	3.50	9.25	5.22	7.69	0.81	1.00	4.25	8.91	3.86
CMC-XXX-5110-80-80	5	11	6.74	2.62	4.40	10.38	6.37	8.81	0.81	1.06	5.31	11.42	4.81
CMC-XXX-5110-96-96	6	12	6.74	2.62	5.40	11.94	7.38	10.19	0.94	1.19	6.35	11.87	4.81

B.O.M.

COMPONENT PART NUMBERS

- ① ALL SIZES-..... NI-5100-(SIZE)-(MATL CODE)
- ② ALL SIZES-..... HC-(SIZE)-(MATL CODE)
- ③ ALL SIZES-..... FL- (HOSE SIZE)-(IPS SIZE)-(CLASS)-(MATL CODE)

-EXAMPLE-

CMC-XXX-5110-40-40

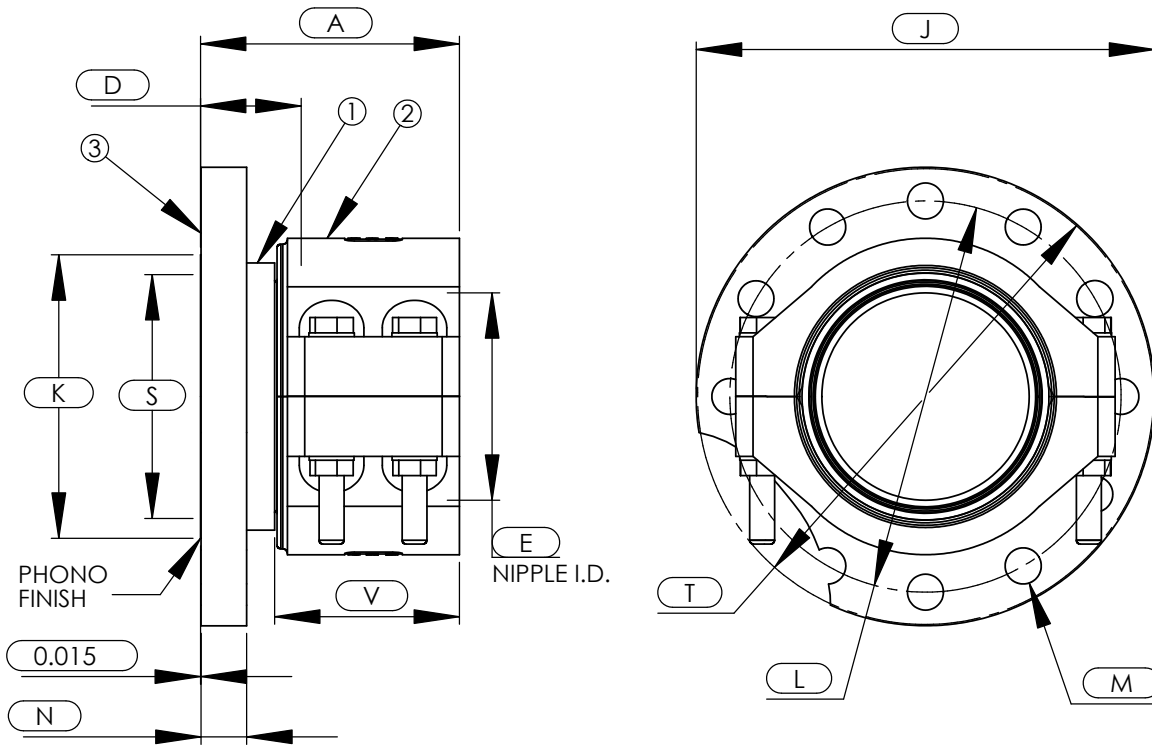
SEE PAGE 2 FOR ASSY MATERIAL DESIGNATIONS.

CMC™ Hose End Fittings QPL-24787-12

Straight Nipple, Class I Flange

MIL-F-24787/1, Group IX, Type F, (Sz 80-96)
 MIL-F-24781/1, Group X, Type F, (Sz 40-64)

CMC-5110



ASSY PART NUMBER	IPS SIZE	BOLT HOLE QTY	A	D	E	J	K	L	M	N	S	T	V
CMC-XXX-5110-40-40	2 1/2	8	4.58	1.95	2.05	7.56	3.27	6.00	0.81	0.94	2.71	7.65	3.24
CMC-XXX-5110-48-48	3	8	5.01	1.95	2.51	8.13	4.50	6.56	0.81	0.94	3.31	7.65	3.71
CMC-XXX-5110-64-64	4	9	5.46	2.36	3.50	9.25	5.22	7.69	0.81	1.00	4.25	8.91	3.86
CMC-XXX-5110-80-80	5	11	6.74	2.62	4.40	10.38	6.37	8.81	0.81	1.06	5.31	11.42	4.81
CMC-XXX-5110-96-96	6	12	6.74	2.62	5.40	11.94	7.38	10.19	0.94	1.19	6.35	11.87	4.81

B.O.M.

COMPONENT PART NUMBERS

- ① ALL SIZES-..... NI-5100-(SIZE)-(MATL CODE)
- ② ALL SIZES-..... HC-(SIZE)-(MATL CODE)
- ③ ALL SIZES-..... FL- (HOSE SIZE)-(IPS SIZE)-(CLASS)-(MATL CODE)

-EXAMPLE-

CMC-XXX-5110-40-40

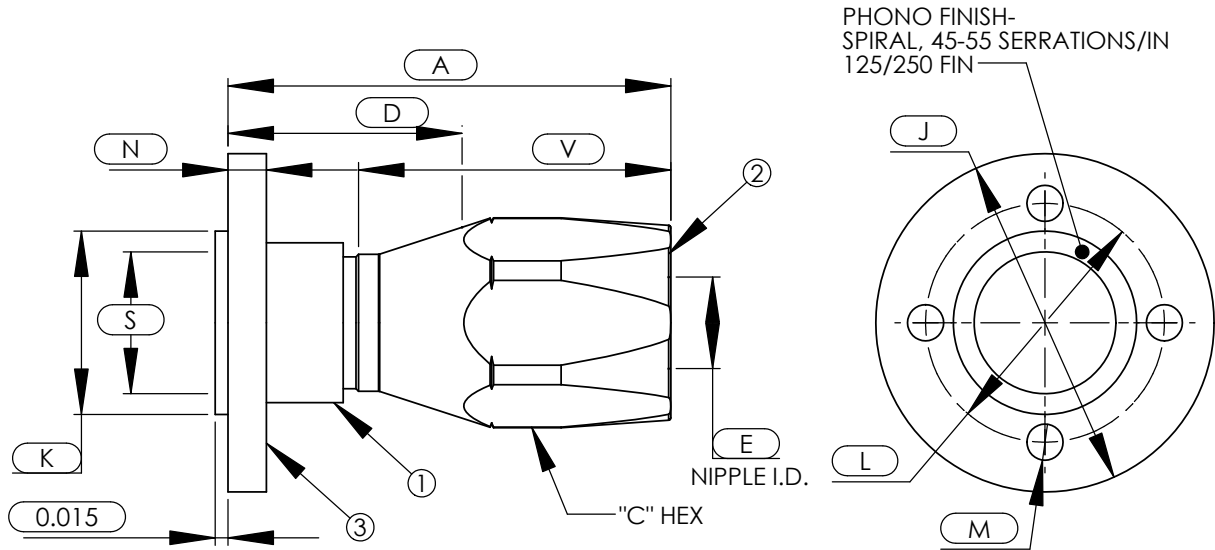
SEE PAGE 2 FOR ASSY MATERIAL DESIGNATIONS.

QPL-24787-12 CMC™ Hose End Fittings

MIL-F-20042 150 Lb Flange (with 400 Lb Thick Flange)
Per MIL-H-24136/3, Type All, MIL-F-24787/1, Group VIII, Type F

Straight Flange

CMC-5121



PART NUMBER	NPS SIZE	NO. OF BOLTS	A	C NOM	D	E	J	K	L	M	N	S	V
CMC-XXX-5121-1/2-16	1/2	3	2.80	1.44	1.53	.82	3.56	1.50	2.44	.56	.69	.71	1.66
CMC-XXX-5121-3/4-16	3/4	4	2.80	1.44	1.53	.82	3.81	1.50	2.69	.56	.69	.71	1.66
CMC-XXX-5121-1-16	1	4	2.80	1.44	1.53	.82	4.25	1.50	3.13	.56	.75	.71	1.66
CMC-XXX-5121-3/4-20	3/4	4	2.89	1.75	1.53	1.05	3.81	1.84	2.69	.56	.69	.92	1.75
CMC-XXX-5121-1-24	1	4	2.92	1.94	1.47	1.16	4.25	2.12	3.13	.56	.75	1.18	1.84
CMC-XXX-5121-1 1/4-32	1 1/4	4	3.51	2.50	1.66	1.69	4.50	2.74	3.38	.56	.81	1.53	2.25
CMC-XXX-5121-1 1/2-32	1 1/2	6	3.51	2.50	1.66	1.69	5.06	2.74	3.94	.56	.81	1.77	2.25
CMC-XXX-5121-2-32	2	6	3.51	2.50	1.66	1.69	5.56	2.74	4.44	.56	.81	1.77	2.25

B.O.M.

COMPONENT PART NUMBERS

- ① ALL SIZES..... NI-5100-(NPS SIZE)-(HOSE SIZE)-(MATL CODE)
- ② ALL SIZES..... SO-5001-(SIZE)-(MATL CODE)
- ③ ALL SIZES..... FL-(NPS SIZE)-(HOSE SIZE)-(TYPE)-(MATL CODE)

-EXAMPLE-

CMC-XXX-5121-1/2-16

SEE PAGE 2 FOR ASSY MATERIAL DESIGNATIONS.

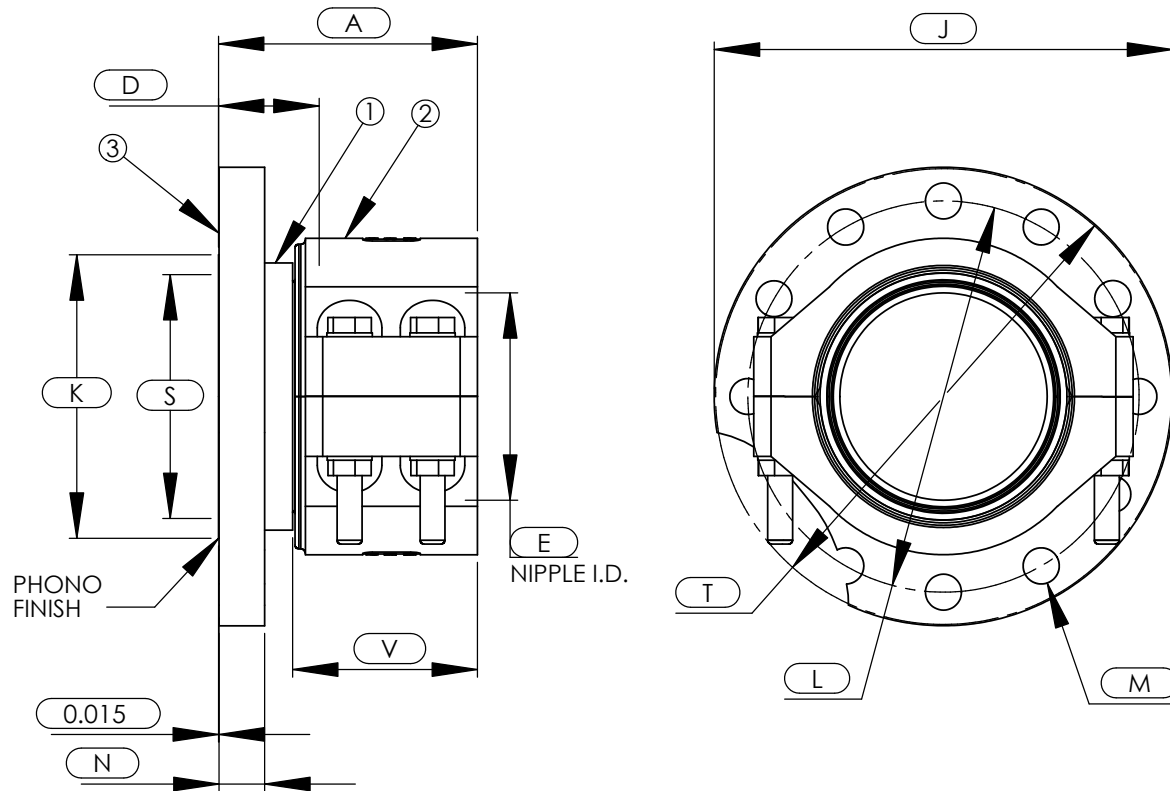


CMC™ Hose End Fittings QPL-24787-12

MIL-F-24787/1, Group IX, Type F, (Sz 80-96)
 MIL-F-24787/1, Group X, Type F, (Sz 40-64)

Straight Nipple, Class II Flange

CMC-5120



PART NUMBER	IPS SIZE	BOLT HOLE QTY	A	D	E	J	K	L	M	N	S	T	V
CMC-XXX-5120-40-40	2 1/2	6	4.58	1.95	2.05	6.13	3.27	5.00	0.56	0.94	2.71	7.65	3.24
CMC-XXX-5120-48-48	3	8	5.01	1.95	2.51	6.63	4.50	5.50	0.56	0.94	3.31	7.65	3.71
CMC-XXX-5120-64-64	4	8	5.46	2.36	3.50	7.69	5.22	6.56	0.56	1.00	4.25	8.91	3.86
CMC-XXX-5120-80-80	5	10	6.74	2.62	4.40	9.06	6.37	7.81	0.69	1.06	5.31	11.42	4.81
CMC-XXX-5120-96-96	6	12	6.74	2.62	5.40	10.13	7.38	8.88	0.69	1.19	6.35	11.87	4.81

B.O.M.

COMPONENT PART NUMBERS

- ① ALL SIZES-..... NI-5100-(SIZE)-(MATL CODE)
- ② ALL SIZES-..... HC-(SIZE)-(MATL CODE)
- ③ ALL SIZES-..... FL- (HOSE SIZE)-(IPS SIZE)-(CLASS)-(MATL CODE)

-EXAMPLE-

CMC-XXX-5120-40-40

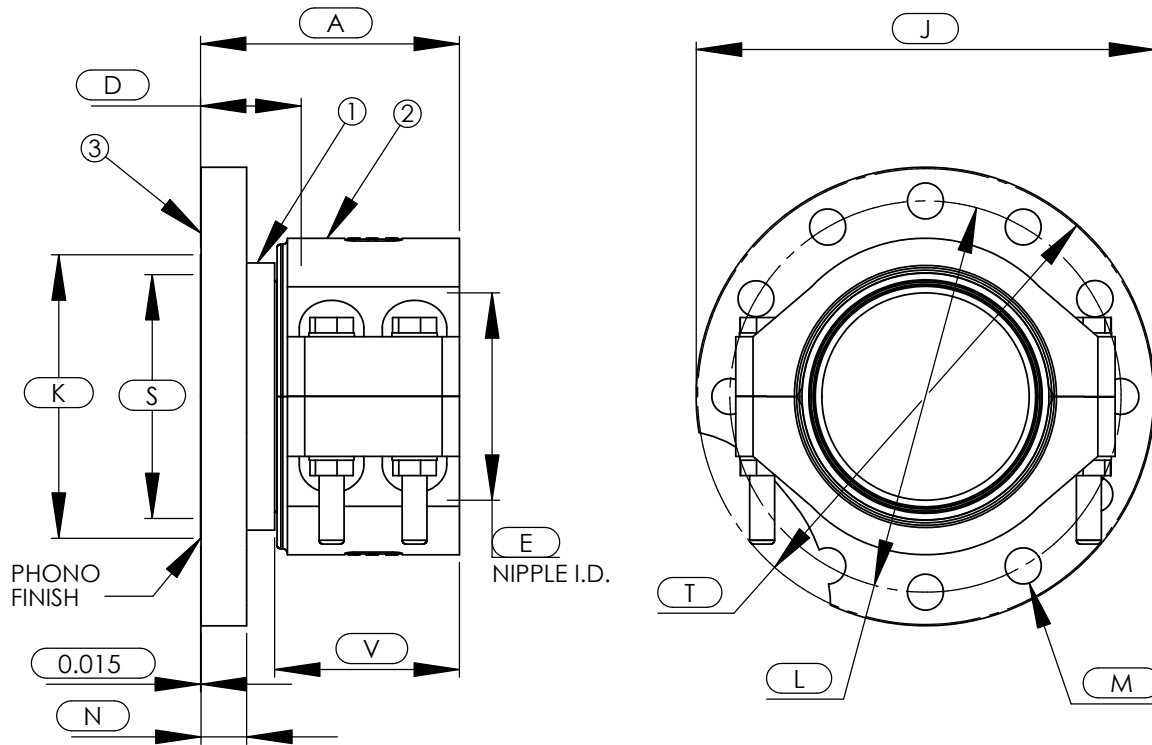
SEE PAGE 2 FOR ASSY MATERIAL DESIGNATIONS.

CMC™ Hose End Fittings QPL-24787-12

MIL-F-24787/1, Group IX, Type F, (Sz 80-96)
 MIL-F-24787/1, Group X, Type F, (Sz 40-64)

Straight Nipple, Class III Flange

CMC-5130



ASSY PART NUMBER	IPS SIZE	BOLT HOLE QTY	A	D	E	J	K	L	M	N	S	T	V
CMC-XXX-5130-40-40	2 1/2	6	4.58	1.95	2.05	6.13	3.27	5.00	0.69	0.94	2.71	7.65	3.24
CMC-XXX-5130-48-48	3	8	5.01	1.95	2.51	6.63	4.50	5.50	0.69	0.94	3.31	7.65	3.71
CMC-XXX-5130-64-64	4	8	5.46	2.36	3.50	7.69	5.22	6.56	0.69	1.00	4.25	8.91	3.86
CMC-XXX-5130-80-80	5	10	6.74	2.62	4.40	9.06	6.37	7.81	0.69	1.06	5.31	11.42	4.81
CMC-XXX-5130-96-96	6	12	6.74	2.62	5.40	10.13	7.38	8.88	0.69	1.19	6.35	11.87	4.81

B.O.M.

COMPONENT PART NUMBERS

- ① ALL SIZES-..... NI-5100-(SIZE)-(MATL CODE)
- ② ALL SIZES-..... HC-(SIZE)-(MATL CODE)
- ③ ALL SIZES-..... FL- (HOSE SIZE)-(IPS SIZE)-(CLASS)-(MATL CODE)

-EXAMPLE-

CMC-XXX-5130-40-40

SEE PAGE 2 FOR ASSY MATERIAL DESIGNATIONS.

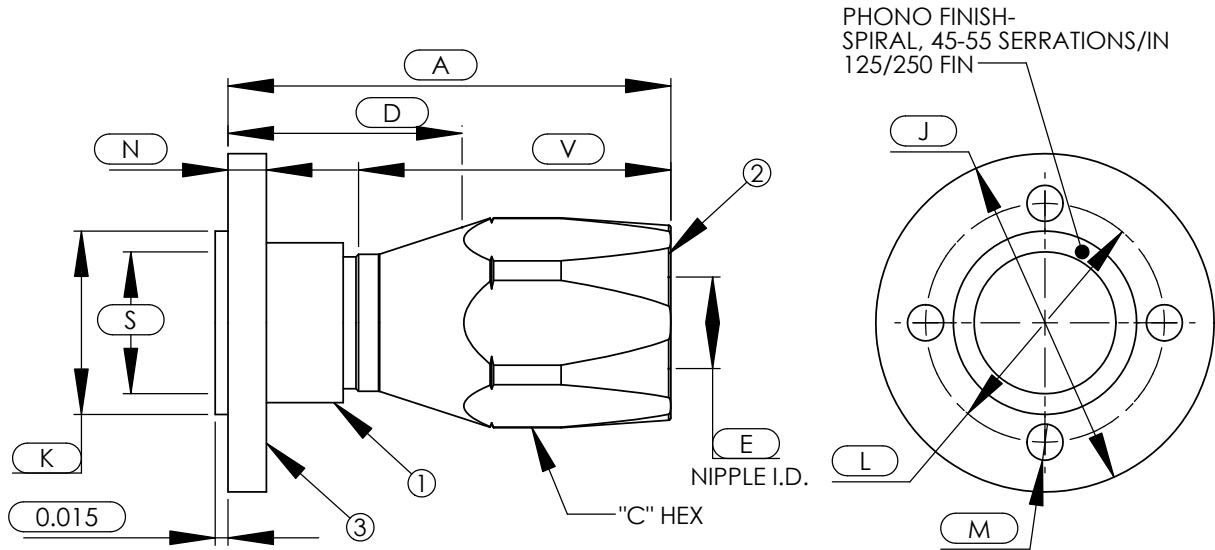
TO ORDER ALTERNATE MATERIALS, SEE PAGE 3.

QPL-24787-12 CMC™ Hose End Fittings

Straight Flange

MIL-F-20042 150 Lb Flange
Per MIL-H-24136/3, Style AIV, MIL-F-24787/1, Group VIII, Type F

CMC-5141



PART NUMBER	NPS SIZE	NO. OF BOLTS	A	C NOM	D	E	J	K	L	M	N	S	V
CMC-XXX-5141-1/2-16	1/2	3	2.80	1.44	1.53	.82	3.56	1.50	2.44	.56	.38	.71	1.66
CMC-XXX-5141-3/4-16	3/4	4	2.80	1.44	1.53	.82	3.81	1.50	2.69	.56	.44	.71	1.66
CMC-XXX-5141-1-16	1	4	2.80	1.44	1.53	.82	4.25	1.50	3.13	.56	.44	.71	1.66
CMC-XXX-5141-3/4-20	3/4	4	2.89	1.75	1.53	1.05	3.81	1.84	2.69	.56	.44	.92	1.75
CMC-XXX-5141-1-24	1	4	2.92	1.94	1.47	1.16	4.25	2.12	3.13	.56	.44	1.18	1.84
CMC-XXX-5141-1 1/4-32	1 1/4	4	3.51	2.50	1.66	1.69	4.50	2.74	3.38	.56	.44	1.53	2.25
CMC-XXX-5141-1 1/2-32	1 1/2	6	3.51	2.50	1.66	1.69	5.06	2.74	3.94	.56	.44	1.77	2.25
CMC-XXX-5141-2-32	2	6	3.51	2.50	1.66	1.69	5.56	2.74	4.44	.56	.44	1.77	2.25

B.O.M.

COMPONENT PART NUMBERS

- ① ALL SIZES.....NI-5100-(NPS SIZE)-(HOSE SIZE)-(MATL CODE)
- ② ALL SIZES.....SO-5001-(SIZE)-(MATL CODE)
- ③ ALL SIZES.....FL-(NPS SIZE)-(HOSE SIZE)-(TYPE)-(MATL CODE)

-EXAMPLE-
CMC-XXX-5141-1/2-16

SEE PAGE 2 FOR ASSY MATERIAL DESIGNATIONS.

custom

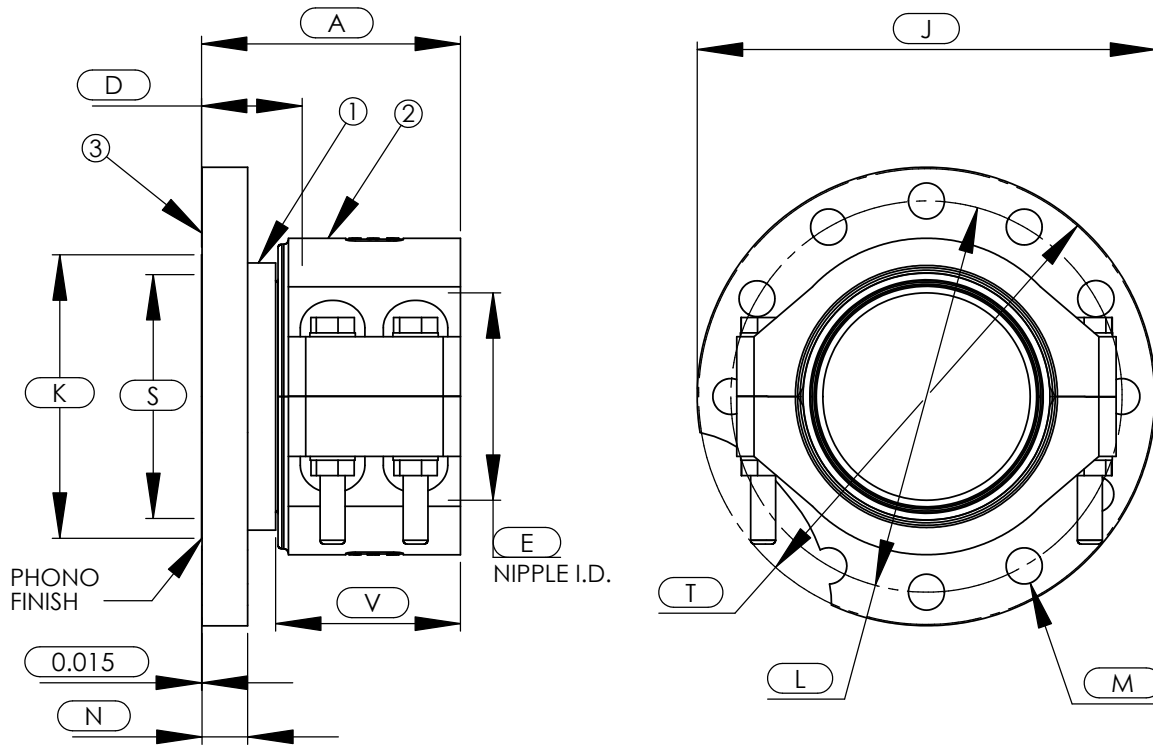
HYDRAULIC & MACHINE INC. (253) 854-4666 PG 30

www.customhydraulic.com

Straight Nipple, Class IV Flange

MIL-F-24787/1, Group IX, Type F, (Sz 80-96)
 MIL-F-24787/1, Group X, Type F, (Sz 40-64)

CMC-5140



PART NUMBER	IPS SIZE	BOLT HOLE QTY	A	D	E	J	K	L	M	N	S	T	V
CMC-XXX-5140-40-40	2 1/2	6	4.58	1.95	2.05	6.13	3.27	5.00	0.56	0.50	2.71	7.65	3.24
CMC-XXX-5140-48-48	3	8	5.01	1.95	2.51	6.63	4.50	5.50	0.56	0.50	3.31	7.65	3.71
CMC-XXX-5140-64-64	4	8	5.46	2.36	3.50	7.69	5.22	6.56	0.56	0.50	4.25	8.91	3.86
CMC-XXX-5140-80-80	5	10	6.74	2.62	4.40	9.06	6.37	7.81	0.69	0.56	5.31	11.42	4.81
CMC-XXX-5140-96-96	6	12	6.74	2.62	5.40	10.13	7.38	8.88	0.69	0.56	6.35	11.87	4.81

B.O.M.

COMPONENT PART NUMBERS

- ① ALL SIZES-..... NI-5100-(SIZE)-(MATL CODE)
- ② ALL SIZES-..... HC-(SIZE)-(MATL CODE)
- ③ ALL SIZES-..... FL- (HOSE SIZE)-(IPS SIZE)-(CLASS)-(MATL CODE)

-EXAMPLE-
 CMC-XXX-5140-40-40

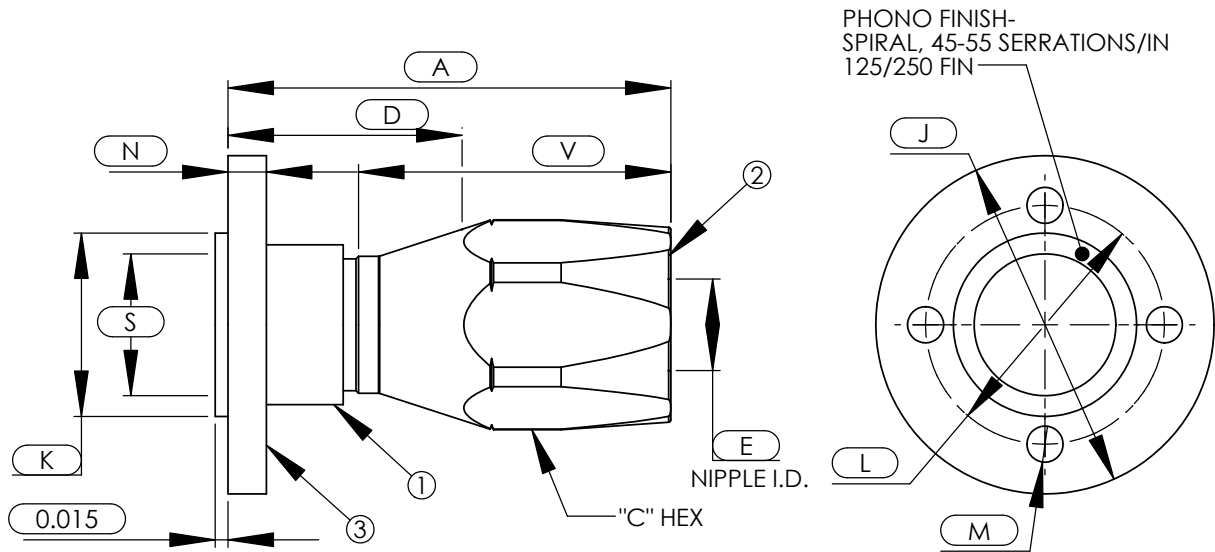
SEE PAGE 2 FOR ASSY MATERIAL DESIGNATIONS.

QPL-24787-12 CMC™ Hose End Fittings

Straight Flange

ANSI-B16.5 150 Lb Flange
Per MIL-H-24136/3, Style AV, MIL-F-24787/1, Group VIII, Type F

CMC-5151



ASSY PART NUMBER	NPS SIZE	NO. OF BOLTS	A	C NOM	D	E	J	K	L	M	N	S	V
CMC-XXX-5151-1/2-16	1/2	4	2.80	1.44	1.53	.82	3.50	1.50	2.38	.62	.36	.71	1.66
CMC-XXX-5151-3/4-16	3/4	4	2.80	1.44	1.53	.82	3.88	1.50	2.75	.62	.42	.71	1.66
CMC-XXX-5151-1-16	1	4	2.80	1.44	1.53	.82	4.25	1.50	3.13	.62	.42	.71	1.66
CMC-XXX-5151-3/4-20	3/4	4	2.89	1.75	1.53	1.05	3.88	1.84	2.75	.62	.42	.92	1.75
CMC-XXX-5151-1-24	1	4	2.92	1.94	1.47	1.18	4.25	2.12	3.13	.62	.42	1.18	1.84
CMC-XXX-5151-1 1/4-32	1 1/4	4	3.51	2.50	1.66	1.69	4.63	2.74	3.50	.62	.42	1.53	2.25
CMC-XXX-5151-1 1/2-32	1 1/2	4	3.51	2.50	1.66	1.69	5.00	2.74	3.88	.62	.42	1.77	2.25
CMC-XXX-5151-2-32	2	4	3.51	2.50	1.66	1.69	6.00	2.74	4.75	.75	.44	1.77	2.25

B.O.M.

COMPONENT PART NUMBERS

- ① ALL SIZES.....NI-5100-(NPS SIZE)-(HOSE SIZE)-(MATL CODE)
- ② ALL SIZES.....SO-5001-(SIZE)-(MATL CODE)
- ③ ALL SIZES.....FL-(NPS SIZE)-(HOSE SIZE)-(TYPE)-(MATL CODE)

-EXAMPLE-

CMC-XXX-5151-1/2-16

SEE PAGE 2 FOR ASSY MATERIAL DESIGNATIONS.

custom

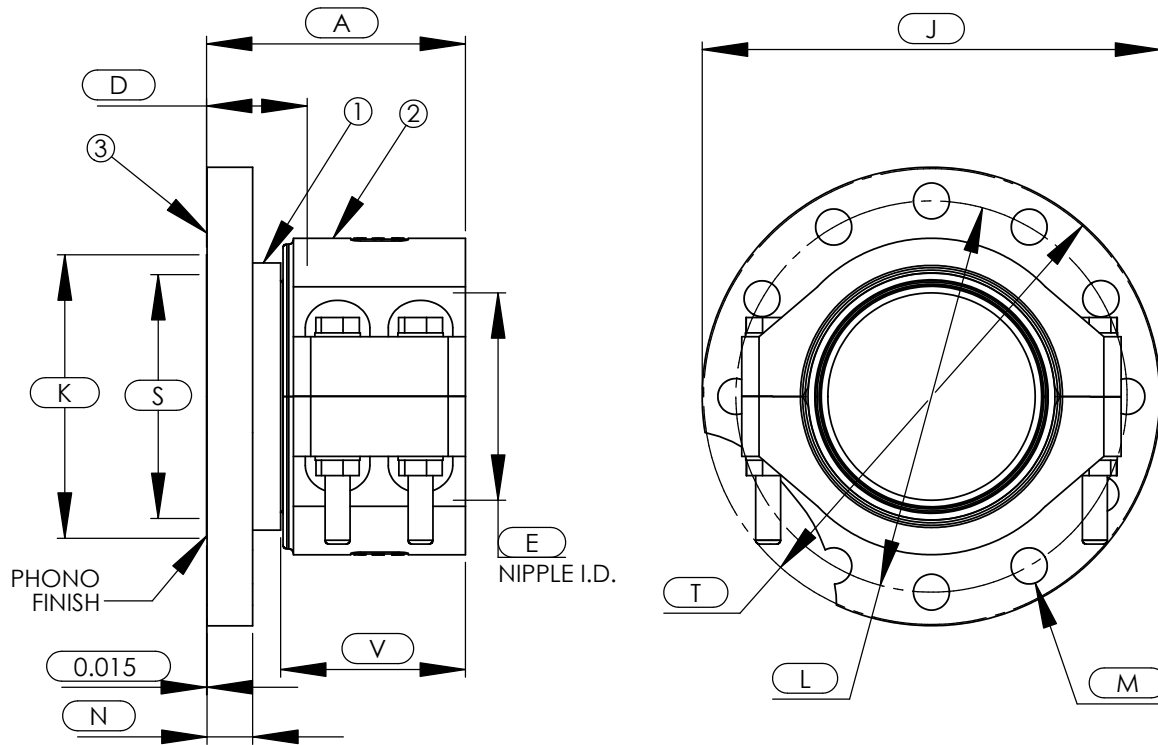
HYDRAULIC & MACHINE INC. (253) 854-4666
www.customhydraulic.com

CMC™ Hose End Fittings QPL-24787-12

Straight Nipple, Class V Flange

MIL-F-24787/1, Group IX, Type F, (Sz 80-96)
 MIL-F-24787/1, Group X, Type F, (Sz 40-64)

CMC-5150



ASSY PART NUMBER	IPS SIZE	BOLT HOLE QTY	A	D	E	J	K	L	M	N	S	T	V
CMC-XXX-5150-40-40	2 1/2	6	4.58	1.95	2.05	7.00	3.27	5.50	0.75	0.48	2.71	7.65	3.24
CMC-XXX-5150-48-48	3	8	5.01	1.95	2.51	7.50	4.50	6.00	0.75	0.48	3.31	7.65	3.71
CMC-XXX-5150-64-64	4	8	5.46	2.36	3.50	9.00	5.22	7.50	0.75	0.48	4.25	8.91	3.86
CMC-XXX-5150-80-80	5	10	6.74	2.62	4.40	10.00	6.37	8.50	0.88	1.05	5.31	11.42	4.81
CMC-XXX-5150-96-96	6	12	6.74	2.62	5.40	11.00	7.38	9.50	0.88	1.17	6.35	11.87	4.81

B.O.M.

COMPONENT PART NUMBERS

- ① ALL SIZES-..... NI-5100-(SIZE)-(MATL CODE)
- ② ALL SIZES-..... HC-(SIZE)-(MATL CODE)
- ③ ALL SIZES-..... FL- (HOSE SIZE)-(IPS SIZE)-(CLASS)-(MATL CODE)

-EXAMPLE-
 CMC-XXX-5150-40-40

SEE PAGE 2 FOR ASSY MATERIAL DESIGNATIONS.